

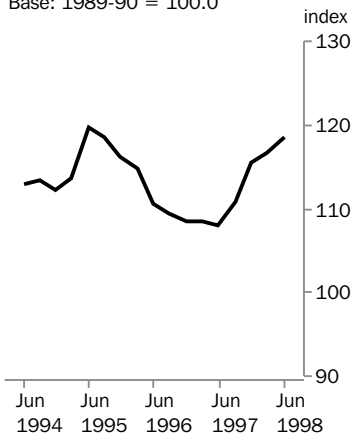
# IMPORT PRICE INDEX

AUSTRALIA

EMBARGO: 11:30AM (CANBERRA TIME) MON 20 JUL 1998

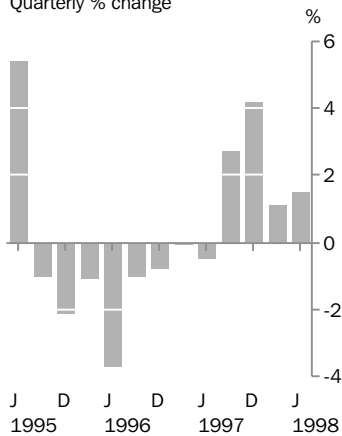
## Index numbers

Base: 1989-90 = 100.0



## All groups

Quarterly % change



## JUNE QTR KEY FIGURES

	<b>% change Mar Qtr 98 to Jun Qtr 98</b>	<b>% change Jun Qtr 97 to Jun Qtr 98</b>
<b>All groups</b>	<b>1.5</b>	<b>9.8</b>
Food and live animals	1.3	13.6
Beverages and tobacco	1.7	8.7
Crude materials	1.3	11.0
Mineral fuels, etc.	-2.1	-9.2
Animal and vegetable oils, etc.	14.4	21.8
Chemical products	3.5	10.7
Manufactured goods, by material	1.7	10.1
Machinery and transport equipment	1.0	10.4
Miscellaneous manufactured articles	2.1	12.1
Commodities and transactions n.e.s.	7.6	7.3

## JUNE QTR KEY POINTS

### ALL GROUPS INDEX

- A continuation of the fall of the Australian dollar against the major trading currencies contributed to a rise in the index for the June quarter. This effect was partly negated by price falls for some commodities due to world market conditions.

### MAJOR MOVEMENTS

- Increased prices for machinery and transport equipment, chemicals and related products and manufactured goods were due primarily to the fall in the value of the Australian dollar.
- Partly offsetting these increases were falls in the prices of petroleum and related products and office and A.D.P. machines.

- For further information about these and related statistics, contact Peter Sturgeon on 02 6252 5348, or any ABS Office.

# NOTES

## FORTHCOMING ISSUES

*ISSUE (Quarter)*

*RELEASE DATE*

September 1998

22 October 1998

December 1998

22 January 1999



## CHANGES IN THIS ISSUE

There are no changes in this issue.



W. McLennan  
Australian Statistician

## IMPORT PRICE INDEX, All Groups

<i>Period</i>	<i>Index numbers(a)</i>	<i>% change from corresponding quarter of previous year</i>	<i>% change from previous period</i>
<b>1994-95</b>	114.8		-0.7
<b>1995-96</b>	115.0		0.2
<b>1996-97</b>	108.6		-5.6
<b>1997-98</b>	115.4		6.3
<b>1994</b>			
June	113.0	-1.1	-0.4
September	113.4	-3.6	0.4
December	112.2	-5.0	-1.1
<b>1995</b>			
March	113.7	0.2	1.3
June	119.8	6.0	5.4
September	118.6	4.6	-1.0
December	116.1	3.5	-2.1
<b>1996</b>			
March	114.8	1.0	-1.1
June	110.5	-7.8	-3.7
September	109.4	-7.8	-1.0
December	108.5	-6.5	-0.8
<b>1997</b>			
March	108.4	-5.6	-0.1
June	107.9	-2.4	-0.5
September	110.8	1.3	2.7
December	115.4	6.4	4.2
<b>1998</b>			
March	116.7	7.7	1.1
June	118.5	9.8	1.5

(a) Base of each index: 1989-90 = 100.0

## IMPORT PRICE INDEX(a), Contribution to All Groups Index

Category	March Qtr 1998	June Qtr 1998	Change
All groups	116.7	118.5	1.8
SITC SECTIONS: Contribution to All Groups Index (index points)			
0 Food and live animals chiefly for food	4.70	4.77	0.07
1 Beverages and tobacco	1.03	1.05	0.02
2 Crude materials, inedible, except fuels	4.01	4.06	0.05
3 Mineral fuels, lubricants and other related materials	4.69	4.59	-0.10
4 Animal and vegetable oils, fats and waxes	0.40	0.46	0.06
5 Chemicals and related products n.e.s.	12.13	12.57	0.44
6 Manufactured goods classified by material	20.04	20.38	0.34
7 Machinery and transport equipment	53.41	53.98	0.57
8 Miscellaneous manufactured articles	15.91	16.25	0.34
9 Commodities and transactions not classified elsewhere	0.41	0.44	0.03

## SITC DIVISIONS: Contribution to All Groups Index (index points)

03 Fish, crustaceans and molluscs and preparations thereof	1.21	1.22	0.01
24 Cork and wood	1.93	1.98	0.05
33 Petroleum, petroleum products and related materials	4.69	4.59	-0.10
51 Organic chemicals	2.59	2.56	-0.03
52 Inorganic chemicals	1.02	1.28	0.26
59 Chemical materials and products n.e.s.	2.00	2.03	0.03
64 Paper, paperboard and articles of paper pulp, paper and paperboard	2.91	2.97	0.06
65 Textile yarn, fabrics, made-up articles n.e.s. and related products	4.99	4.99	0.00
69 Manufactures of metals n.e.s.	3.42	3.50	0.08
71 Power generating machinery and equipment	3.62	3.71	0.09
72 Machinery specialised for particular industries	7.14	7.16	0.02
74 General industrial machinery and equipment n.e.s.	7.96	8.16	0.20
75 Office machines and automatic data processing machines	4.59	4.49	-0.10
76 Telecommunications and sound recording equipment	3.28	3.27	-0.01
77 Electrical machinery, apparatus, appliances n.e.s.	5.81	5.90	0.09
78 Road vehicles	15.29	15.37	0.08
79 Other transport equipment	5.73	5.93	0.20
87 Professional, scientific and controlling instruments and apparatus n.e.s.	3.12	3.18	0.06
89 Miscellaneous manufactured articles n.e.s.	6.53	6.66	0.13

(a) For an explanation of this table see paragraph 16 of the Explanatory Notes

## IMPORT PRICE INDEX(a), By SITC Section

<i>Period</i>	<i>Food and live animals chiefly for food (0)</i>	<i>Beverages and tobacco (1)</i>	<i>Crude materials, inedible, except fuels (2)</i>	<i>Mineral fuels, lubricants and other related materials (3)</i>	<i>Animal and vegetable oils, fats and waxes (4)</i>	<i>Chemicals and related products n.e.s. (5)</i>	<i>Manufactured goods classified chiefly by material (6)</i>	<i>Machinery and transport equipment (7)</i>	<i>Miscellaneous manufactured articles (8)</i>	<i>Commodities and transactions not classified elsewhere (9)</i>
<b>1994-95</b>	116.6	106.6	121.9	90.2	140.4	108.8	110.4	121.1	113.5	104.4
<b>1995-96</b>	115.9	109.8	125.8	89.8	170.1	115.1	115.7	117.4	114.2	103.7
<b>1996-97</b>	112.8	114.3	110.2	98.1	158.8	107.5	109.6	108.5	111.2	93.6
<b>1997-98</b>	129.0	126.0	119.1	93.4	156.4	112.9	116.7	115.5	120.3	90.5
<b>1994</b>										
June	105.2	107.0	113.9	91.0	115.3	100.0	109.5	120.9	114.0	106.1
September	107.7	106.0	115.6	96.5	123.8	101.9	109.1	120.6	113.4	105.0
December	117.3	106.4	118.6	85.0	135.3	103.3	108.7	118.6	112.1	102.7
<b>1995</b>										
March	119.4	105.9	122.5	86.4	142.4	110.7	109.7	119.0	112.5	102.4
June	122.1	108.0	130.9	92.7	160.1	119.3	114.0	126.1	115.8	107.5
September	121.1	109.6	130.4	86.4	163.0	119.5	117.2	123.0	115.4	104.6
December	117.6	110.2	128.3	86.3	167.9	116.2	117.4	118.7	115.5	103.8
<b>1996</b>										
March	113.9	110.2	127.4	93.8	175.3	114.1	115.8	116.4	114.6	107.0
June	111.0	109.3	117.2	92.6	174.3	110.6	112.5	111.4	111.1	99.3
September	112.2	109.8	112.2	92.2	167.2	109.2	110.2	110.1	111.9	98.0
December	110.9	112.5	108.2	101.0	166.8	107.5	109.5	108.5	110.7	95.7
<b>1997</b>										
March	112.3	115.7	110.0	103.9	155.6	107.1	109.5	107.9	110.9	90.9
June	115.8	119.2	110.4	95.3	145.4	106.3	109.3	107.6	111.4	89.6
September	125.4	122.0	114.7	94.2	141.7	108.3	111.9	110.8	114.3	87.6
December	129.4	125.0	118.4	104.3	151.8	112.0	116.1	114.9	119.8	89.0
<b>1998</b>										
March	129.8	127.4	120.9	88.4	154.8	113.7	118.3	117.6	122.3	89.3
June	131.5	129.6	122.5	86.5	177.1	117.7	120.3	118.8	124.9	96.1

(a) Base of each index: 1989-90 = 100.0

## IMPORT PRICE INDEX(a), By Selected SITC Division

<i>Period</i>	<i>Petroleum, petroleum products and related materials (33)</i>	<i>Organic chemicals (51)</i>	<i>Paper, paperboard and articles made of paper (64)</i>	<i>Textile yarn, fabrics, and related products (65)</i>	<i>Power generating machinery and equipment (71)</i>	<i>Machinery specialised for particular industries (72)</i>
<b>1994-95</b>	90.2	111.6	97.6	110.2	131.5	120.0
<b>1995-96</b>	89.8	105.1	116.8	113.1	131.1	120.2
<b>1996-97</b>	98.1	100.6	100.3	108.7	120.6	115.5
<b>1997-98</b>	93.4	111.5	104.8	117.6	131.8	126.1
<b>1994</b>						
June	91.0	98.0	96.0	108.1	131.3	119.5
September	96.5	103.0	95.2	108.5	130.9	118.7
December	85.0	109.8	95.4	109.0	129.4	117.0
<b>1995</b>						
March	86.4	113.2	97.0	109.3	129.6	119.0
June	92.7	120.2	102.7	113.8	136.2	125.2
September	86.4	116.3	114.9	115.7	135.7	123.5
December	86.3	103.3	120.1	115.6	133.0	121.6
<b>1996</b>						
March	93.8	100.6	118.3	112.3	130.6	119.9
June	92.6	100.3	113.8	108.9	124.9	115.7
September	92.2	99.3	104.8	108.2	122.1	116.2
December	101.0	99.0	100.5	107.7	120.3	115.4
<b>1997</b>						
March	103.9	100.2	98.4	109.2	120.0	114.0
June	95.3	104.0	97.5	109.6	119.9	116.3
September	94.2	110.1	99.3	112.7	125.2	119.3
December	104.3	111.2	103.7	117.2	130.9	126.2
<b>1998</b>						
March	88.4	112.9	107.0	120.2	133.7	129.3
June	86.5	111.8	109.2	120.3	137.2	129.7

(a) Base of each index: 1989-90 = 100.0

IMPORT PRICE INDEX(a), By Selected SITC Division *continued*

<i>Period</i>	<i>General industrial machinery, equipment and parts (74)</i>	<i>Office machines and ADP machines (75)</i>	<i>Telecommunications and sound recording equipment (76)</i>	<i>Electrical machinery, etc. and parts thereof (77)</i>	<i>Road vehicles (78)</i>	<i>Other transport equipment (79)</i>
<b>1994-95</b>	127.4	82.9	104.8	109.5	149.8	118.6
<b>1995-96</b>	126.9	70.1	99.1	107.3	147.3	116.8
<b>1996-97</b>	119.4	60.0	84.9	99.6	136.3	113.2
<b>1997-98</b>	131.4	60.5	85.2	104.4	142.3	127.9
<b>1994</b>						
June	126.9	86.9	107.3	109.6	145.4	119.7
September	126.5	84.9	105.8	109.5	147.2	118.4
December	123.8	82.2	104.2	108.0	145.8	116.2
<b>1995</b>						
March	125.8	80.3	103.3	107.9	146.4	118.0
June	133.6	84.1	105.7	112.6	159.8	121.6
September	131.6	79.0	104.2	111.4	154.5	119.6
December	127.9	70.4	101.2	109.4	148.2	118.8
<b>1996</b>						
March	125.8	67.6	98.7	106.5	146.0	117.9
June	122.1	63.4	92.2	102.0	140.4	111.0
September	120.8	62.4	87.9	101.0	138.5	111.7
December	119.0	60.4	85.3	99.6	136.7	111.7
<b>1997</b>						
March	118.5	59.0	84.2	99.0	135.7	114.4
June	119.2	58.1	82.3	98.9	134.2	114.9
September	123.6	58.9	83.5	99.6	139.4	118.7
December	129.9	60.8	85.0	103.9	141.6	126.0
<b>1998</b>						
March	134.3	61.8	86.4	106.2	143.6	131.2
June	137.7	60.5	86.0	107.8	144.4	135.7

(a) Base of each index: 1989-90 = 100.0

## IMPORT PRICE INDEX(a), By Selected ATSN Section

<i>Period</i>	<i>Prepared foodstuffs, beverages and tobacco (4)</i>	<i>Mineral products (5)</i>	<i>Chemical industry products (6)</i>	<i>Plastics and rubber, and articles thereof (7)</i>	<i>Wood pulp, paper and paper products (10)</i>	<i>Textiles and textile articles (11)</i>	<i>Base metals and articles thereof (15)</i>	<i>Machinery and electrical equipment (16)</i>	<i>Transport equipment (17)</i>	<i>Instruments, clocks and watches, optical and photographic apparatus (18)</i>
<b>1994-95</b>	110.9	98.9	103.9	114.1	98.0	108.4	108.2	106.3	141.9	124.9
<b>1995-96</b>	114.6	98.9	109.9	120.5	113.8	109.5	113.5	101.5	139.3	125.4
<b>1996-97</b>	112.8	106.3	103.0	114.1	100.3	104.1	107.9	93.1	130.3	119.3
<b>1997-98</b>	126.5	103.1	106.9	120.9	108.4	112.7	114.1	99.2	138.7	125.3
<b>1994</b>										
June	106.0	98.6	96.3	109.2	95.0	107.4	107.6	107.9	138.8	123.0
September	106.4	104.4	96.7	111.4	95.8	107.6	106.7	106.8	139.8	123.9
December	108.9	93.7	98.3	111.3	96.3	107.0	106.0	104.7	138.2	122.3
<b>1995</b>										
March	111.8	95.4	106.2	113.8	97.3	107.4	108.1	104.7	139.3	123.0
June	116.3	102.0	114.2	119.7	102.6	111.4	112.0	109.0	150.2	130.3
September	117.3	95.4	113.2	123.6	111.9	112.4	114.8	106.8	145.5	128.4
December	116.1	95.7	110.2	122.7	117.4	111.3	115.4	102.7	140.5	127.3
<b>1996</b>										
March	114.0	102.8	109.4	120.1	116.9	108.8	113.7	100.4	138.6	125.1
June	111.0	101.5	106.9	115.5	108.9	105.3	110.2	96.0	132.7	120.6
September	111.3	101.4	105.8	113.8	102.3	104.0	108.6	94.7	131.5	121.6
December	111.9	108.5	103.4	113.5	100.5	103.1	108.4	93.1	130.2	119.3
<b>1997</b>										
March	112.7	111.8	102.2	114.1	99.6	104.3	107.6	92.3	130.1	118.3
June	115.2	103.5	100.6	114.9	98.9	104.9	106.8	92.3	129.3	117.9
September	120.0	103.0	102.9	115.8	102.2	108.1	110.0	94.6	134.1	120.1
December	125.6	113.8	106.2	119.6	107.0	112.4	113.6	98.8	137.8	125.8
<b>1998</b>										
March	128.6	98.4	107.2	123.3	110.8	115.1	115.4	101.2	140.6	126.5
June	131.8	97.1	111.1	124.9	113.7	115.3	117.4	102.0	142.4	128.8

(a) Base of each index: 1989-90 = 100.0



## IMPORT PRICE INDEX(a), By Selected ANZSIC Industry of Origin Division

<i>Period</i>	<i>Agriculture, forestry and fishing (A)</i>	<i>Mining (B)</i>	<i>Manufacturing (C)</i>
<b>1994-95</b>	141.7	102.5	113.8
<b>1995-96</b>	136.3	104.5	113.5
<b>1996-97</b>	128.0	115.6	106.8
<b>1997-98</b>	154.9	110.0	113.5
<b>1994</b>			
June	107.9	92.6	113.1
September	117.4	101.8	112.9
December	145.0	97.7	111.4
<b>1995</b>			
March	149.3	101.0	112.6
June	155.1	109.4	118.3
September	146.3	101.6	117.1
December	137.7	101.7	114.7
<b>1996</b>			
March	133.8	108.2	113.2
June	127.4	106.4	109.0
September	124.8	110.0	107.8
December	122.8	119.4	106.7
<b>1997</b>			
March	127.9	121.8	106.5
June	136.4	111.0	106.1
September	158.4	110.7	108.8
December	158.7	122.9	113.1
<b>1998</b>			
March	154.1	103.7	115.1
June	148.2	102.6	117.0

(a) Base of each index: 1989-90 = 100.0

## IMPORT PRICE INDEX(a), By Selected ANZSIC Industry of Origin Subdivision

<i>Period</i>	<i>Agriculture (1)</i>	<i>Oil and gas extraction (12)</i>	<i>Food, beverages and tobacco (21)</i>	<i>Textiles (221-222)</i>	<i>Clothing, footwear and leather (223-226)</i>	<i>Wood and paper products (23)</i>	<i>Printing, publishing and recorded media (241-243)</i>
<b>1994-95</b>	141.6	102.8	112.9	110.9	103.8	110.4	111.5
<b>1995-96</b>	136.2	103.5	117.8	114.6	102.1	119.9	114.9
<b>1996-97</b>	127.8	117.8	115.3	108.4	100.8	106.7	114.5
<b>1997-98</b>	154.7	107.9	125.4	116.7	110.5	112.9	128.4
<b>1994</b>							
June	107.9	92.7	107.1	107.2	106.5	109.9	112.6
September	117.4	103.1	108.3	108.3	105.4	108.9	111.6
December	145.0	97.3	111.1	109.1	102.8	108.9	110.2
<b>1995</b>							
March	149.1	100.5	113.6	110.1	102.5	110.0	110.1
June	154.9	110.2	118.7	116.1	104.4	113.9	113.9
September	146.1	100.7	119.8	117.7	103.2	121.1	114.1
December	137.6	99.8	118.7	116.6	102.4	123.2	116.3
<b>1996</b>							
March	133.6	108.0	117.5	114.0	102.3	121.3	116.3
June	127.3	105.4	115.0	110.2	100.5	114.1	112.9
September	124.6	109.3	115.8	108.2	100.9	108.1	113.9
December	122.6	123.6	115.3	107.4	100.0	106.5	113.8
<b>1997</b>							
March	127.8	125.7	114.6	108.8	100.7	106.3	114.8
June	136.2	112.5	115.5	109.0	101.7	105.9	115.3
September	158.2	110.6	118.9	112.0	105.1	108.3	120.8
December	158.5	123.9	124.5	116.3	109.8	112.0	126.2
<b>1998</b>							
March	153.9	99.8	127.3	119.3	112.1	114.1	131.6
June	148.0	97.2	131.0	119.2	114.8	117.1	135.1

(a) Base of each index: 1989-90 = 100.0

IMPORT PRICE INDEX(a), By Selected ANZSIC Industry of Origin Subdivision *continued*

<i>Period</i>	<i>Petroleum, coal, chemical and associated products (25)</i>	<i>Non-metallic mineral products (26)</i>	<i>Basic metal products (271-273)</i>	<i>Fabricated metal products (274-276)</i>	<i>Transport equipment (281-282)</i>	<i>Other machinery and equipment (283-286)</i>	<i>Other manufacturing (29)</i>
<b>1994-95</b>	104.9	116.5	100.3	117.2	137.9	107.4	111.3
<b>1995-96</b>	109.2	117.2	106.5	117.3	136.0	102.7	111.2
<b>1996-97</b>	104.8	115.9	100.5	111.7	127.2	94.6	109.8
<b>1997-98</b>	109.0	125.5	104.2	119.5	135.8	100.1	119.1
<b>1994</b>							
June	101.9	115.3	98.5	120.7	135.2	108.6	111.5
September	103.1	115.9	98.0	118.5	136.0	107.7	110.8
December	100.4	115.0	97.6	116.1	134.4	105.7	109.6
<b>1995</b>							
March	104.9	114.7	100.2	116.4	135.4	105.8	110.8
June	111.0	120.3	105.2	117.9	145.6	110.4	113.8
September	111.1	119.3	106.6	119.6	141.6	107.9	112.2
December	109.4	117.8	108.5	117.7	137.2	103.9	111.7
<b>1996</b>							
March	109.4	117.8	107.6	117.2	135.5	101.7	111.5
June	106.7	114.0	103.2	114.8	129.7	97.2	109.3
September	104.9	115.7	102.2	111.8	128.3	96.3	109.9
December	104.9	116.9	101.4	111.6	127.1	94.6	109.0
<b>1997</b>							
March	105.4	115.9	99.2	112.3	127.1	93.7	109.7
June	103.9	114.9	99.0	111.1	126.3	93.6	110.4
September	105.2	117.4	101.3	113.5	131.0	95.7	112.4
December	109.6	124.7	103.4	119.0	134.9	99.9	118.1
<b>1998</b>							
March	109.4	126.7	104.7	121.4	137.7	101.9	121.1
June	111.7	133.1	107.3	124.0	139.7	102.7	124.8

(a) Base of each index: 1989-90 = 100.0

## IMPORT PRICE INDEX(a), By BEC Category

<i>Period</i>	<i>Food and beverages</i>	<i>Industrial supplies n.e.s.</i>	<i>Fuels and lubricants</i>	<i>Capital goods, and parts and accessories thereof</i>	<i>Transport equipment, and parts and accessories thereof</i>	<i>Consumer goods n.e.s.</i>
<b>1994-95</b>	119.5	106.6	93.0	110.0	136.8	114.0
<b>1995-96</b>	119.8	113.4	90.7	104.0	135.1	114.1
<b>1996-97</b>	116.0	105.8	99.0	95.0	126.9	110.1
<b>1997-98</b>	132.6	112.8	90.2	100.7	135.1	118.4
<b>1994</b>						
June	106.1	102.0	93.0	111.3	134.4	114.9
September	109.5	102.6	99.3	110.4	135.1	114.2
December	120.3	103.3	87.5	108.2	133.5	112.7
<b>1995</b>						
March	122.6	107.2	89.1	108.2	134.3	113.0
June	125.7	113.4	96.1	113.1	144.1	116.1
September	124.7	115.5	88.0	110.2	140.6	115.6
December	121.5	115.0	87.3	105.2	136.2	115.1
<b>1996</b>						
March	117.8	113.5	94.9	102.5	134.5	114.5
June	115.0	109.6	92.5	97.9	129.1	111.1
September	115.3	107.1	92.3	96.9	127.8	110.8
December	114.2	105.5	102.2	95.0	126.8	109.9
<b>1997</b>						
March	115.2	105.4	105.4	94.1	126.8	109.8
June	119.1	105.3	96.0	94.0	126.2	109.7
September	128.7	108.0	94.3	96.2	130.4	112.5
December	132.7	111.7	101.0	100.5	134.2	117.6
<b>1998</b>						
March	133.1	114.2	83.8	102.7	136.9	120.6
June	135.7	117.2	81.8	103.2	139.0	123.0

(a) Base of each index: 1989-90 = 100.0

## IMPORT PRICE INDEX(a), By BEC End Use Class

<i>Period</i>	<i>Capital goods</i>	<i>Intermediate goods</i>	<i>Consumption goods</i>
<b>1994-95</b>	119.8	107.6	119.2
<b>1995-96</b>	116.0	109.2	119.6
<b>1996-97</b>	107.7	102.5	115.2
<b>1997-98</b>	113.7	109.1	123.2
<b>1994</b>			
June	120.6	103.8	118.8
September	119.8	105.0	118.7
December	117.7	104.6	117.4
<b>1995</b>			
March	117.9	107.2	118.0
June	123.9	113.5	122.8
September	120.8	113.0	121.8
December	117.7	109.9	120.6
<b>1996</b>			
March	115.2	108.9	119.8
June	110.1	104.9	116.3
September	109.2	103.0	116.0
December	107.8	102.4	115.1
<b>1997</b>			
March	107.0	102.6	114.9
June	106.7	101.9	114.9
September	109.3	104.9	117.9
December	113.2	109.4	122.7
<b>1998</b>			
March	115.6	110.1	124.7
June	116.7	111.8	127.3

(a) Base of each index: 1989-90 = 100.0

## EXPLANATORY NOTES

INTRODUCTION	<p><b>1</b> This publication presents index numbers measuring changes in the prices of imports of merchandise landed in Australia — the <i>Import Price Index</i>. It is calculated on a reference base of 1989–90 = 100.0.</p>
SCOPE	<p><b>2</b> The Import Price Index, either directly or indirectly, covers about 95% of merchandise imported during 1988–89 and 1989–90.</p> <p><b>3</b> The remaining imports are not represented because of the inherent difficulties in pricing the items to a constant quality. These unrepresented items include:</p> <ul style="list-style-type: none"><li>▪ live animals (not for food)</li><li>▪ jewellery and other articles of precious metal n.e.s.</li><li>▪ military equipment</li><li>▪ special transactions</li><li>▪ commodities not classified according to kind</li><li>▪ works of art, collectors' pieces, antiques</li><li>▪ ships of various types.</li></ul> <p><b>4</b> The index numbers for each quarter relate to prices of those imports of merchandise that are physically landed in Australia during that quarter.</p>
CLASSIFICATION	<p><b>5</b> Index numbers for sections and selected divisions of the Standard International Trade Classification (SITC), Revision 3 are provided in tables 3 and 4, while index numbers for selected sections of the Combined Australian Customs Tariff and Statistical Nomenclature (ATSN) are provided in table 5.</p> <p><b>6</b> Tables 6 and 7 contain index numbers for selected Divisions and Subdivisions, on an 'industry of origin' basis, of the Australian and New Zealand Standard Industrial Classification (ANZSIC). The 'industry of origin' is the industry in which the imported commodity would be classified as primarily produced had it been produced in Australia, determined in accordance with the classification rules of the ANZSIC.</p> <p><b>7</b> Table 8 contains index numbers for categories of the United Nations' Classification by Broad Economic Categories (BEC). Table 9 contains index numbers for these categories rearranged to form the broader end use classes: Capital goods, Intermediate goods and Consumption goods. Each category has been allocated wholly to one of these classes except for:</p> <ul style="list-style-type: none"><li>▪ category 321, Motor spirit (which has been allocated in part to Intermediate goods and in part to Consumption goods)</li><li>▪ category 51, Passenger motor cars (which has been allocated in part to Capital goods and in part to Consumption goods).</li></ul>
ITEMS AND WEIGHTS	<p><b>8</b> The index is a fixed weights index. The commodities directly represented in the index (the index items), were selected on the basis of their import values during 1988–89 and 1989–90. They constituted approximately 95% of the total value of imports of merchandise to Australia during these years. The selected items were allocated weights in accordance with the average value of imports for each item during 1988–89 and 1989–90. These weights were then revalued to reflect 1989–90 price levels. Many of the items carry not only their own weight but also the weight of unpriced commodities whose prices are considered to move in a similar manner. The weighting pattern of the Import Price Index, i.e. the percentage contributions for index items and groups, was shown in the September 1991 issue of this publication.</p>

## EXPLANATORY NOTES

### PRICE MEASUREMENT

**9** Prices of individual shipments are obtained from importers of the selected items and relate to the quarter in which the goods arrive in Australia. Imports are priced on a 'free on board' (f.o.b.), country of origin basis. Freight and insurance charges involved in shipping goods from foreign to Australian ports are therefore excluded from the prices used in the index, as are Australian import duties.

**10** As the prices used in the index are expressed in Australian currency, changes in the relative value of the Australian dollar and overseas currencies can have a direct impact on price movements for the many commodities that are bought in currencies other than Australian dollars. Prices reported in a foreign currency are converted to Australian dollars using the relevant exchange rates. Where imports are purchased at prices expressed in terms of a foreign currency and forward exchange cover is used, the prices in the index *exclude* the forward exchange cover.

**11** The price series used relate to specified standards, grades, types, etc. of each commodity. The aim is to incorporate in the index price changes for imports of representative goods of constant quality. Wherever possible, prices from predominant countries of origin are used for each of the specified goods priced in order to lessen the impact of price variations attributable solely to changes, over time, in the mix of countries of origin. In most cases prices are combined using fixed weights between markets. Weights between countries are reviewed from time to time and revised where necessary.

### INDEX NUMBERS

**12** Index numbers for financial years are simple averages of quarterly index numbers.

### REVISIONS

**13** In cases where more complete information is obtained after index numbers for a period have been published, or it is discovered that incorrect prices have been used in compiling the indexes, revisions to index numbers may occur in subsequent issues of this publication.

### ANALYSIS OF INDEX CHANGES

**14** Care should be exercised when interpreting quarter-to-quarter movements in the indexes as short-term movements do not necessarily indicate changes in trend.

**15** Movements in indexes from one period to another can be expressed either as changes in 'index points' or as percentage changes. The following example illustrates the method of calculating index points changes and percentage changes between any two periods:

All groups index numbers —

June Quarter 1998	118.5 (see Table 1)
less June Quarter 1997	107.9 (see Table 1)
Change in index points	10.6
Percentage change =	$\frac{10.6}{107.9} \times 100 = 9.8$

**16** Table 2 provides an analysis of the contribution which selected categories of imports make to the All groups index. For example, Road vehicles contributed 15.37 index points to the All groups index number of 118.5 for June Quarter 1998 and 0.08 index points to the net change of 1.8 index points.

## EXPLANATORY NOTES

FURTHER INFORMATION	<p><b>17</b> The September 1991 issue of this publication contains a more detailed description of the index. A detailed description of the previous Import Price Index is contained in the December Quarter 1982 issue of this publication.</p> <p><b>18</b> Further information on the index is presented in the publication <i>Producer and Foreign Trade Price Indexes: Concepts, Sources and Methods</i> (6419.0).</p>
RELATED PUBLICATIONS	<p><b>19</b> Users may also wish to refer to the following publications which are available from ABS Bookshops:</p> <ul style="list-style-type: none"><li>▪ <i>Export Price Index, Australia</i> (6405.0)</li><li>▪ <i>Price Indexes of Articles Produced by Manufacturing Industry, Australia</i> (6412.0)</li><li>▪ <i>Price Indexes of Materials Used in Manufacturing Industries, Australia</i> (6411.0).</li></ul> <p><b>20</b> Other ABS publications that may be of interest include <i>Balance of Payments, Australia</i> (5302.0).</p> <p><b>21</b> Current publications produced by the ABS are listed in the <i>Catalogue of Publications and Products, Australia</i> (1101.0). The ABS also issues, on Tuesdays and Fridays, a <i>Release Advice</i> (1105.0) which lists publications to be released in the next few days. The Catalogue and Release Advice are available from any ABS office.</p>
UNPUBLISHED STATISTICS	<p><b>22</b> As well as the statistics included in this and related publications, the ABS may have other relevant unpublished data available. Inquiries should be made to Peter Sturgeon on 02 6252 5348 or to any ABS office.</p>
SYMBOLS AND OTHER USAGES	<p>ANZSIC Australian and New Zealand Standard Industrial Classification</p> <p>ATSN Combined Australian Tariff and Statistical Nomenclature</p> <p>BEC Classification by Broad Economic Categories</p> <p>f.o.b. free on board</p> <p>n.e.s. not elsewhere specified or included</p> <p>r revised</p> <p>SITC Standard International Trade Classification</p>









## SELF-HELP ACCESS TO STATISTICS

*PHONE* Call 1900 986 400 for the latest statistics on CPI, Labour Force, Earnings, National Accounts, Balance of Payments and other topics (call cost is 75c per minute).

*INTERNET* <http://www.abs.gov.au>

*LIBRARY* A range of ABS publications is available from public and tertiary libraries Australia wide. Contact your nearest library to determine whether it has the ABS statistics you require.

## WHY NOT SUBSCRIBE?

*PHONE* +61 1300 366 323

*FAX* +61 03 9615 7848

## CONTACTING THE ABS

ABS provides a range of services, including: a telephone inquiry service; information consultancy tailored to your needs; survey, sample and questionnaire design; survey evaluation and methodological reviews; and statistical training.

<i>INQUIRIES</i>	<i>By phone</i>	<i>By fax</i>
Canberra	02 6252 6627	02 6253 1404
Sydney	02 9268 4611	02 9268 4668
Melbourne	03 9615 7755	03 9615 7798
Brisbane	07 3222 6351	07 3222 8283
Perth	08 9360 5140	08 9360 5955
Adelaide	08 8237 7400	08 8237 7566
Hobart	03 6222 5800	03 6222 5995
Darwin	08 8943 2111	08 8981 1218

*POST* Client Services, ABS, PO Box 10, Belconnen, ACT 2616



2641400006988

ISSN 0812-7247

RRP \$16.00

© Commonwealth of Australia 1998

Produced by the Australian Bureau of Statistics